

Chapter 11. Consumable Part Specifications

11. Consumable Part Specifications

11.1 List of Expendable Parts

This chapter describes all of the expendable parts used in Mini Bank 1500

No.	Item	Default Item	Remark
1	Receipt Paper		567897-01
2	Magnetic Card		-

<Table 1> List of Expendables

11.2 Receipt Paper

11.2.1 Applicable Product

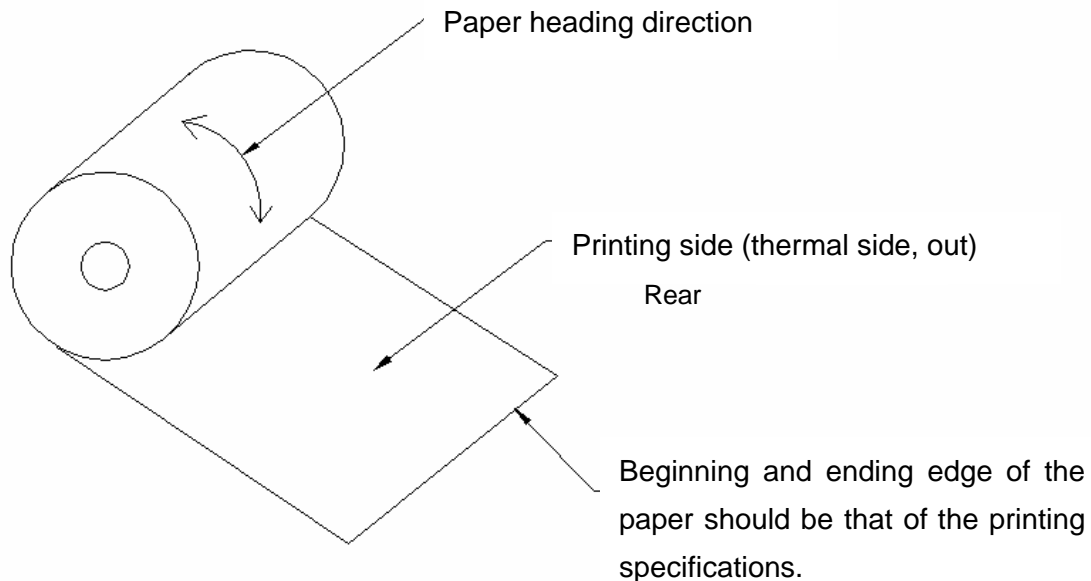
This purchase specification applies to purchase for Mini Bank 1500 receipt paper.

11.2.2 Specification of the Receipt Paper

Paper type: Thermal roll paper

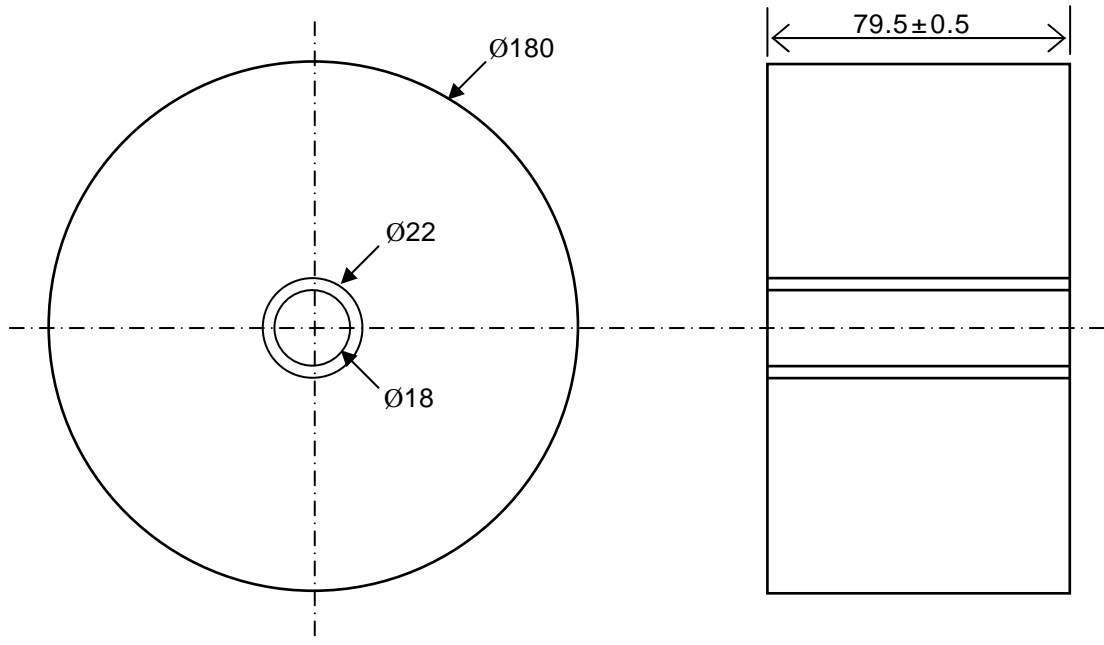
Print color: Black

Specification : Paper detects heat. Roll enough for 3,200 slips.



<Figure> Paper Specifications

11.2.3 Roll appearance



<Figure 2> External roll dimension

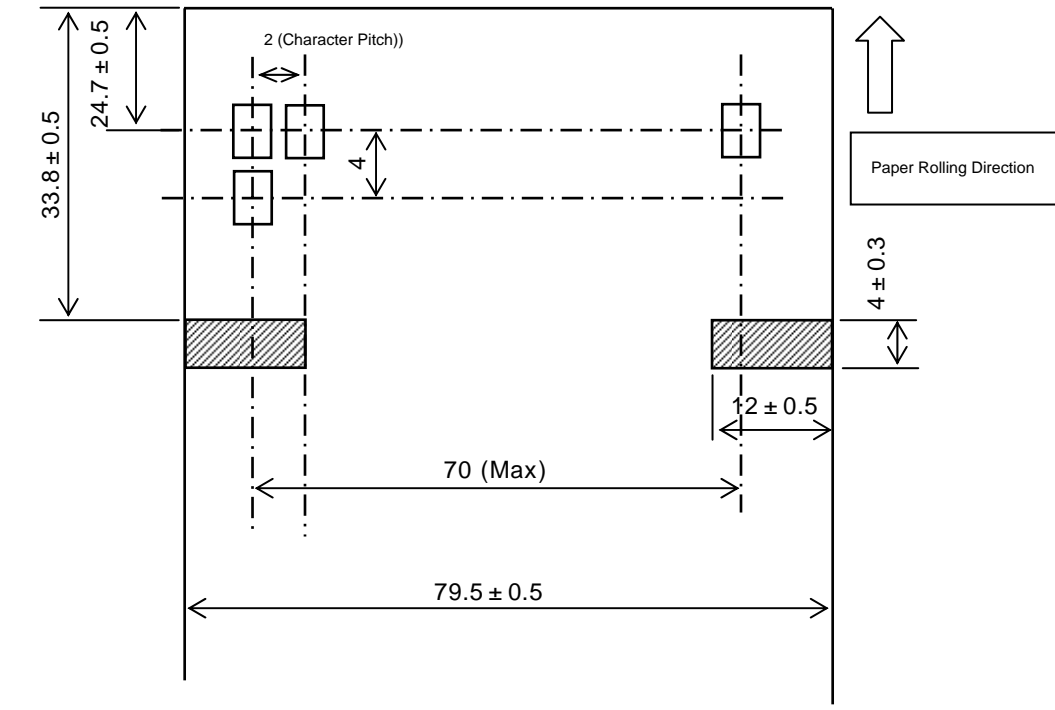
Note 1) Store the paper roll separately to prevent damage to the paper.

Note 2) Do not connect the papers with tape.

Note 3) Make sure the paper end is not attached to the paper pipe.

Note 4) Make sure the paper is rolled evenly.

11.2.4 Printing Position for One Sheet and Black Mark



<Figure> Paper Length and Printing Position for a Transaction

Note 1) Vertical margin is 0.6 x 10 mm.

Note 2) Difference of the characters in the paper rolling direction is ± 0.3 mm.

11.2.5 Printing specification of the black mark

- 1) Use black without dark or bright shades.
- 2) Use the oil ink. (no surface gloss)
- 3) Permeation ratio: Less than 10%
- 4) Reflection ratio - PCS 0.9 or higher (Less than Mark GBase PCM II 900nm)
- 5) Thickness should take precedence over reflection ratio.
- 6) The slippery gap between the black mark and the rule mark should be less than 0.5mm.

11.2.6 Paper Handling Precautions

1) Store it away from high temperature and humidity

If the paper is stored in a place where temperature is above 50 or humidity is above 90% RH, the coloring capability may deteriorate or the paper surface may inflate.

2) Refrain from exposing to direct sunlight

The paper surface can be inflated if you expose it to direct sunlight or leave it under the fluorescent lamp for a long time.

3) Keep it away from the organic solvents

Paper color may change if the paper comes in contact with organic solvents or glues containing organic solvent.

4) Keep it away from plastics

If the paper comes in contact with materials containing plastics, its coloring capability may deteriorate or de-coloring of the paper may occur.

5) Miscellaneous

If the paper comes in contact with carbon copy paper or if the paper surface is scratched with a metallic object, de-coloring may occur.

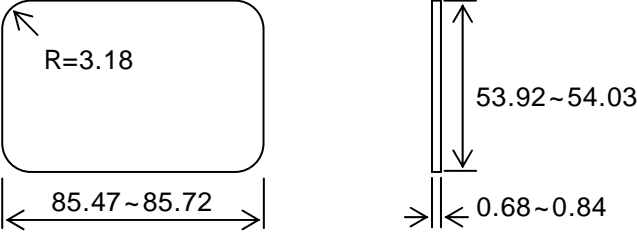

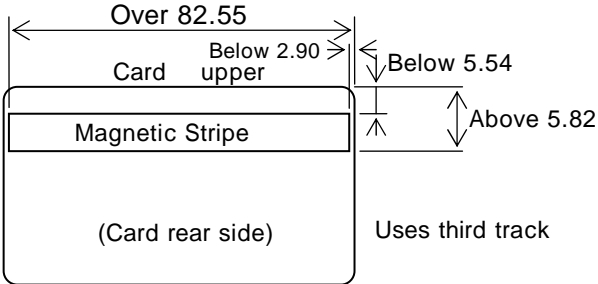
11.3 Magnetic Card

11.3.1 Applicable Product

This purchase specification applies to magnetic identification card for MCRW test.

11.3.2 Card Specifications

The following table shows the physical specification of the ISO card.

Item	ISO Card (Unit : mm)
Length	
Card Bending	
Magnetic Strip Location	

<Table > Physical specifications of the ISO magnetic card

Note) For more details, refer to the ISO 7810.

Item	ISO Card		
	First track	Second track	Third track(Not Used)
Read/write	Read	Read	Read
Track location			
Record method	F2F		
Printing Thickness	8.27 b/mm±8%(210bpi)	2.95 b/mm±5%(75bpi)	8.27 b/mm±8%(210bpi)
Data Printing Amount	79 Characters	40 Characters	107 Characters
Error Detection	Odd Parity Check		
Position of the first and last data bit			

<Table> Magnetic Writing Specification of the ISO Magnetic Card

For more details, refer to the ISO 7811-2, 4 and 5.