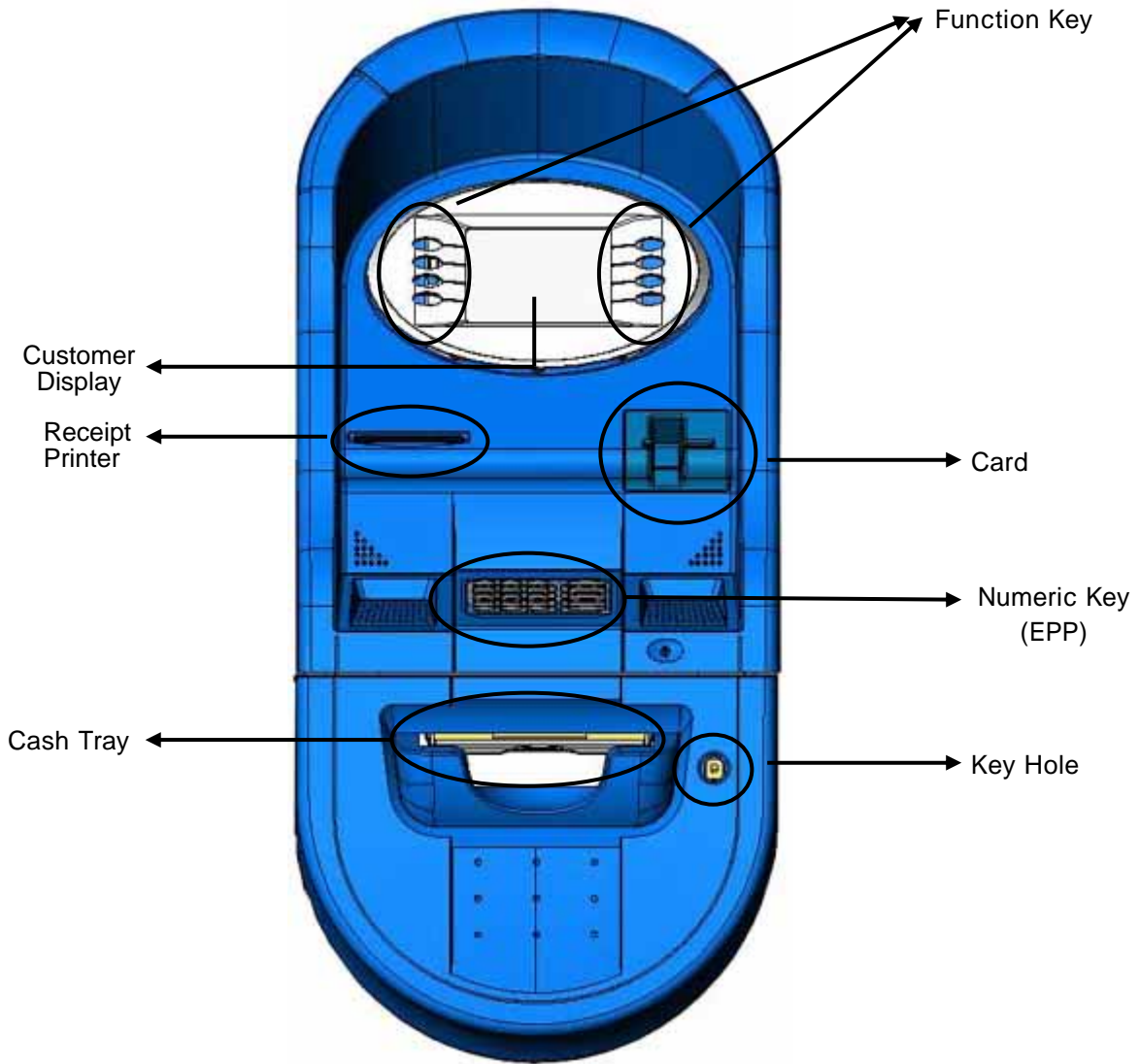


## Chapter 4. Customer Handling Unit

## 4. Customer Handling Unit

### 4.1 External Appearance / Functional Diagram



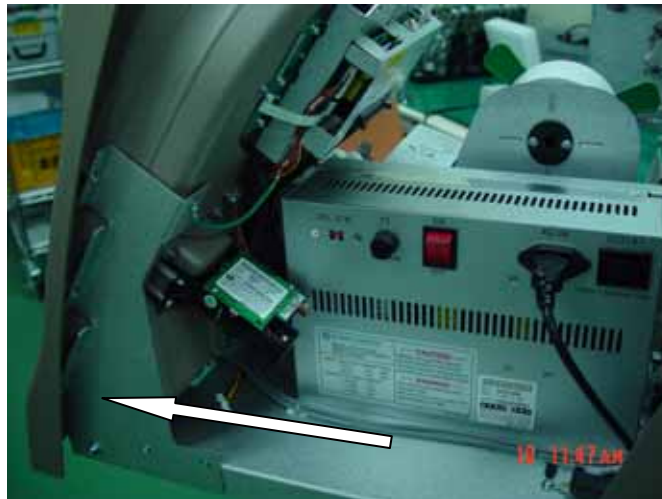
## 4.2 Module Disassembly / Assembly Diagram

### 4.2.1 Monitor (LCD)

1) Unlock front panel with key



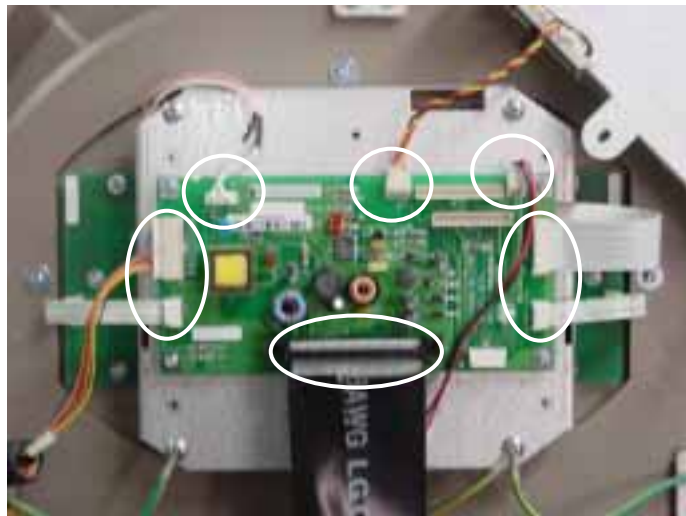
2) Pull front panel



3) Unscrew the screws marked in the figure below.



4) Remove the cables connected to board.



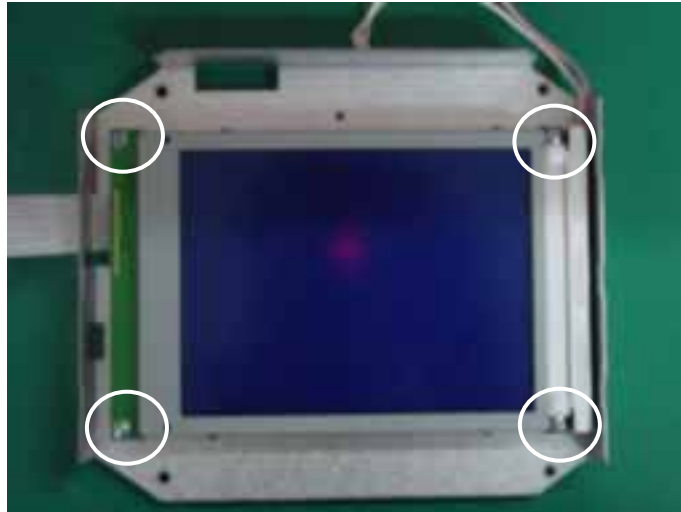
5) Unscrew the screws marked in the figure below. Then, remove the LCD assembly



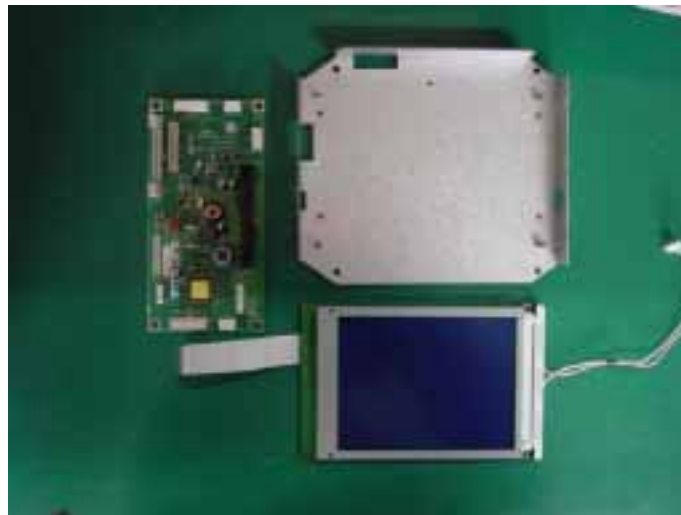
6) Unscrew the screws marked in the figure below. Then, remove the PNC board.



7) Uncscrew the screws marked in the figure below. Then, remove the LCD



8) The following picture is after the LCD, the PNC board, and the case are disassembled:



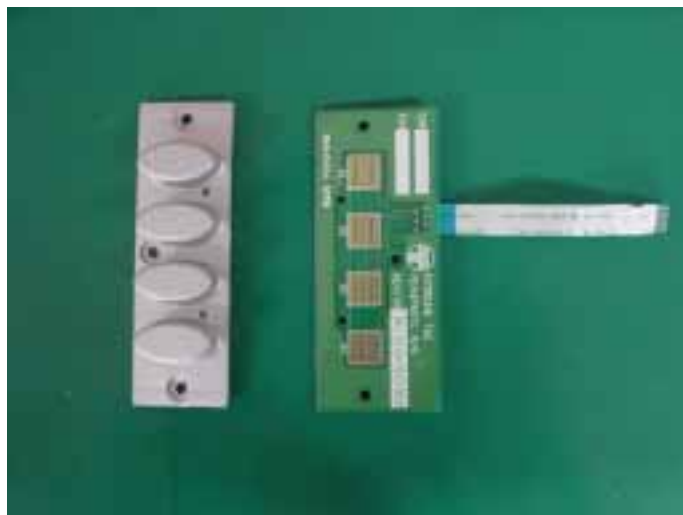
9) Take the reverse of the steps of (1) ~ (8) for reassembly.

4.2.2 Disassembling Function Key Pad

- 1) Same as Steps 1) ~ 5) of 4.2.1.
- 2) Unscrew the screws marked in the figure below. Then, remove Function Key



- 3) The following picture is after function keys are removed:



4.2.3 Disassembling Customer Display Keys

- 1) Same as Steps 1) ~ 5) of 4.2.1.
- 2) Remove the cables connected to board



- 3) Unscrew the screws marked in the figure below. Then, remove Customer Display Key



4) The following picture is after the cable and the Customer Display key are removed:

